

FINGRR™

PDL-1

User Manual

www.andcolors.com/fingrr

Thank you for purchasing our Smart fingerprint padlock.

- Please read the user manual carefully before using this product.
- Please keep the user manual for future reference.

You can download user manual and view movie manuals:
www.andcolors.com/fingrr/manual



Warnings

To avoid damaging the equipment, personal injury or loss of life, please take the following precautions while operating this device.

1. Do not place the fingerprint padlock inside the mouth or body.
2. Keep away from any flammable or explosive gas.
3. Make sure the output of the charging adaptor is 5V when charging.
4. Do not insert any foreign object into USB port or locking hole.
5. Do not submerge the fingerprint padlock into water and any other liquid.
6. Keep the fingerprint padlock away from any open flame or fire.
7. This device contains a battery. When disposing of the fingerprint padlock please insure to follow regional and local laws, ordinances, and government regulations.

Components

The following items are included with this product. Please check that you have received everything.

1. Fingerprint padlock
2. Type-C USB cable
3. User manual

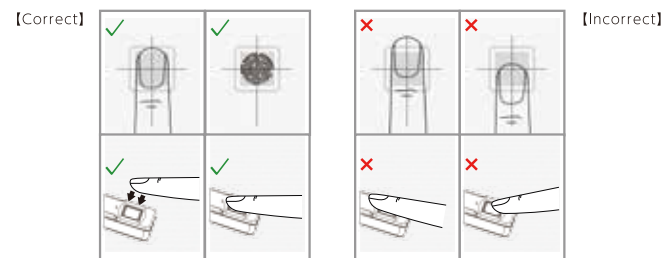
Part names

- A. Locking hole : Push in or pull out the steel cable to lock or unlock.
- B. Plastic Body : ABS+PC case.
- C. USB type-C port : For charging the fingerprint padlock. Please keep the USB port closed except when charging.
- D. Fingerprint panel : Place your finger here to identify.
- E. Indicator LED : Displays the device status.
- F. Steel cable : Extra strength steel cable.



How to correctly place fingerprint

Please refer to the following instructions. Place the finger on the fingerprint panel correctly. It is important to remember the position of the registered fingerprint in order to insure efficient unlocking.



Align the center of the fingertip with the center of the fingerprint panel and place the fingertip straight and vertically on the panel.

The center of the fingertip is misaligned with the center of the fingerprint panel or pressed diagonally.

Important

In this manual, the operation of the fingerprint authentication panel is defined as follows.

- **Press:** The fingerprint is pressed lightly and released after about one second.
- **Extended Press:** The fingerprint is pressed lightly until there is a reaction such as the LED lighting up or beep sound. Please repeat if there is no response for more than 5 seconds.

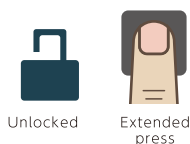
- Please keep your finger clean when pressing the fingerprint panel.
- Your finger should not be too wet or too dry.
- If your fingerprint has an irregularity due to injury or some other reason, please use another finger to operate the device.

Fingerprint registration

If no fingerprint is registered, any fingerprint can be used to unlock the padlock. By registering a fingerprint, it will function as the fingerprint authentication padlock. Please first register the administrator account's fingerprint (admin fingerprint) that will be used for device management. After registering the admin fingerprint, you can register another nine fingerprints. Up to 10 fingerprints can be registered in total including the admin fingerprint.

How to check the empty status

Checking if fingerprints are registered with this product. Open the lock and place the finger on the panel for three seconds.



● **On : Empty Status** If the blue light turns on, it means the padlock is empty. You can setup the admin fingerprint.

● ◀ ▶ ● **Flash : Non-Empty Status** If the blue and red light flash alternately, it means the padlock has an admin fingerprint registered.

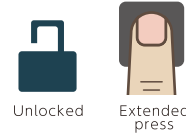
Setting up admin fingerprint

The admin fingerprint must be authenticated when registering user account fingerprints (user fingerprint) or resetting. Only one admin fingerprint can be registered. The fingerprint first registered from the initial state becomes the admin fingerprint.

Step 1 * It is important to do each step one after the other in quick succession.

In the unlocked state, after pressing the fingerprint panel for three seconds, the blue light will turn on. It is now ready for registering the admin fingerprint.

● **On : Ready**



Step 2

After completing step one, quickly press the finger you want to register as the admin fingerprint, on the fingerprint panel. When the blue light turns off with a beep, release the finger. Repeat until you have done this 10 times. If the fingerprint reading fails, the LED light will turn red and you will hear a beep 4 times. If the reading fails, continue with the operation until a total of 10 successful attempts have been achieved.

● **Flash : Each time finger is placed (total 10 times)**

● **On : Failed** If the fingerprint reading fails, the LED light will turn red and you will hear a beep 4 times. If the reading fails you, continue with the operation until a total of 10 successful attempts have been achieved.



Notice If you fail five times in a row, the operation will be canceled. Please repeat making sure to touch slowly and accurately until the LED light flashes blue 10 times.

Step 3

The blue light will flash and you will hear a long beep, then the light will turn off and the device will be placed in standby status.

● **On : Successful** The admin fingerprint setting is SUCCESSFUL.

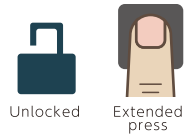
Setting up user fingerprints

In order to enable locking/unlocking with fingerprints other than the admin fingerprint, please register the additional user fingerprints. In addition to the admin fingerprint, you can register nine fingerprints (10 fingerprints in total including the admin fingerprint). After registering the admin fingerprint, you can register other user fingerprints. Please register according to who will need access to the device.

Step 1 * It is important to do each step one after the other in quick succession.

In the unlocked state, after pressing the fingerprint panel for 3 seconds, the blue and red light will flash alternately. The device is now ready to identify the admin fingerprint.

● ◀ ▶ ● **Flash : Ready**



Step 2

Press the fingerprint panel with the admin fingerprint.



● **On : Identified** The LED will turn blue and you will hear a beep. The admin fingerprint is authenticated and ready for user fingerprint registration. Proceed to the next step while the LED is lit blue.

● ◀ ▶ ● **Flash : Incorrect identification** If incorrect identification the red and blue lights will flash alternately with 4 beeps. Please try again.

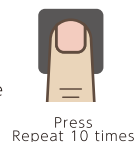
Notice You can try a total of five times. If all attempts fail, the light will turn off and the device will enter the standby status. Please start again from the beginning.

● ▶ ▶ ● **On : Fingerprints are full** If the fingerprints are full, the blue light will turn on and you will hear a beep. The red light will then turn on and you will hear 4 more beeps. Finally the light will turn off and the device will enter the standby status.

Notice If the fingerprints are full, you will need to reset the padlock in order to register new fingerprints.

Step 3

Press the finger you want to register as the user fingerprint, on the fingerprint panel. When the blue light turns off with a beep, release the finger. Repeat until you have done this successfully 10 times. If the fingerprint reading fails, the LED light will turn red and you will hear a beep 4 times. If the reading fails, continue with the operation until a total of 10 successful attempts have been achieved.



● **Flash : Each time finger is placed (total 10 times)**

● **On : Failed** If the fingerprint reading fails, the LED light will turn red and you will hear a beep 4 times. If the reading fails you, continue with the operation until a total of 10 successful attempts have been achieved.

Notice If you fail five times in a row, the fingerprint registration will be canceled. Please repeat the fingerprint registration process slowly and accurately until a total of 10 blue LED flashes.

Step 4

The blue light will turn on and you will hear a long beep. The light will then turn off and the device will enter the standby status.

● **On : Successful** The user fingerprint setting is SUCCESSFUL.

Lock / Unlock

Lock

When in the unlocked status, insert the steel cable into the locking hole. The red light will flash and you will hear a beep. The light will turn off and the device will enter standby status.

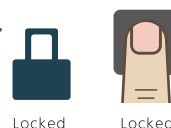


● **Flash : Lock successful**

● **Off : Failed** If the light is off when pressing the fingerprint panel it means the padlock is still in the unlocked status. Please insert the steel cable in the locking hole firmly one more time.

Unlock

When the padlock is in the locked status, press the fingerprint panel with a registered fingerprint, the blue light will turn on with 2 beeps.



Notice The padlock supports 360-degree finger rotation placement on the panel to unlock.

● **On : Unlocking** The blue light will turn on with 2 beeps. The blue light will turn off after 5 seconds and the device will be in the unlocked state. Pull out the steel cable from locking hole. You can remove the steel cable even if the blue light is still on.

● **On : Failed** If the fingerprint is incorrect, the red light will turn on with 4 beeps. The light will then turn off and the device will be in the standby status. Please press the fingerprint panel one more time.

Notice If the registered fingerprint is not authenticated, please try again making sure to press slowly and accurately.

Resetting

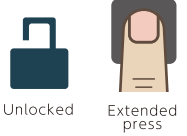
If the fingerprint storage is full, you will need to reset the padlock in order to register new fingerprints.

Notice All registered fingerprints will be deleted after resetting. Please note that registered fingerprints cannot be deleted individually. After resetting you will need to register them again.

After successfully resetting, you can use any finger to unlock. Please remember to setup the admin fingerprint first before using the padlock.

Step 1 * It is important to do each step one after the other in quick succession.

When in the unlocked state, press the fingerprint panel until the blue and red light flash alternately. Continue pressing the fingerprint panel until the red light flashes. The device is now ready for identifying.



● ◀ ▶ ● ▶ ▶ ● **Flash : Reset ready**

While the LED is flashing red, proceed to the next step.

Step 2

When the LED is flashes red, press and release the fingerprint panel with the admin fingerprint.



● **On : RESET successful** The red light will turn on with a long beep. The light will then turn off and the device will enter the standby status.

The resetting process is SUCCESSFUL. All registered fingerprints will be deleted and the device will return to its initial state.

● **Flash : RESET failed** In the case of incorrect identification, the red light will continue flashing with 4 beeps. Please try again.

Notice You can try a total of 5 times. If all attempts fail, the light will turn off and the device will enter the standby status. Please try again from the beginning.

Charging

After being fully charged, the device can be locked/unlocked approximately 2500-3000 times (Tested under normal circumstances in our lab).When the remaining charge reaches about 20% or less, the LED light will blink green each time you press the fingerprint panel. Please re-charge as soon as possible.

Step 1

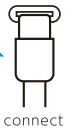
If when pressing the fingerprint panel, the light flashes green it means the battery power is low and the padlock needs to be recharged.



● **Flash : Low power**

Step 2

Use the factory original included USB type-C cable to connect the fingerprint padlock and adaptor with the 5V output. The green light will stay on when charging.

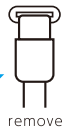


● **On : Charging**

Notice To avoid malfunction, please do not use the fingerprint padlock when charging. Please ensure to use standard commercially available cellular phone's 5V USB charging adapters.

Step 3

When the padlock is fully charged, the green light will turn off. Please remove the USB type-C cable from the padlock.



● **Off : Power Full**

Troubleshooting

Symptoms	Reasons	Solutions
When pressing the panel the light does not turn on	No power	Charge the fingerprint padlock.
	In unlocked status	Re-insert the steel cable in the padlock locking hole firmly
Any fingerprint can unlock the padlock	The padlock is in the empty status, you can use any fingerprint to unlock	Set admin fingerprint
Cannot lock	The finger is too dry/wet	Make sure to use the device only in moderate humidity environments
	Fingerprint unclean	Clean the registered fingerprint
	Irregular fingerprint due to injury, etc.	Use another finger to create registered fingerprint
	The mechanism is jammed	Reinsert the steel cable into the locking hole of the padlock then unlock again

Specification

Model Name	PDL-01
USB type-C input	5V/100mA
Battery	80mAh 3.7V
Fingerprint scanning time	≤ 0.5 sec.
Fingerprint matching time	≤ 1.0 sec.
Working temperature	-10°C ~ 45°C
Working humidity	40%RH ~ 90%RH
False rejection rate(FRR)	< 0.1%
False acceptance rate(FAR)	< 0.001%
Fingerprint storage capacity	10
Protection level	IP65
Dimension	2.44×0.97×0.54in (62×24.5×13.7mm)
Net Weight	1.06oz (30g)
Length of steel cable	130mm (5.12in)

Warranty

Warranty period
We provide a 12 months warranty period for defective products for manufacturing process and material defects. The warranty date is from the day and time of original purchase as stated on the original purchase receipt. During the warranty period, the original purchase receipt must be provided together with the product. Disassembly or repair of the product by non-authorized personnel is strictly prohibited and will void the warranty.

Warranty coverage
Problems caused by normal use and not caused by external damage. We shall not be liable for any inconvenience or loss caused by the inability to use the product during the maintenance of the product. In principle, the user does not need to pay the repair cost if the product is in the warranty period. However the user will need to pay the cost of testing or spare parts if the product is beyond the warranty period.

Not covered by warranty
This Limited Warranty does not cover: (a) defects or damage resulting from accident, misuse, abnormal use, abnormal conditions, improper storage, burned circuit, contamination by foreign matter, exposure to liquid, moisture, dampness, sand or dirt, neglect, or unusual physical, electrical or electromechanical stress. Other conditions such as products subject to fire, water, general corrosion, biological intrusion, or input voltage generating operating conditions beyond the maximum value and minimum value of the charging technology requirements of product.